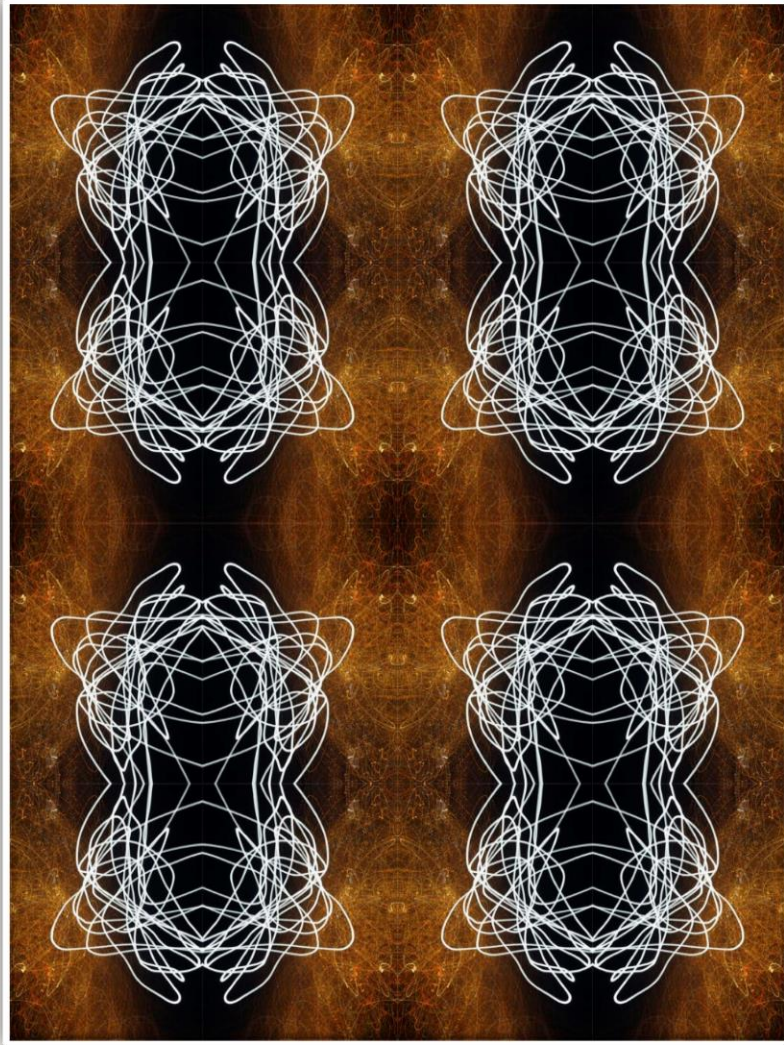
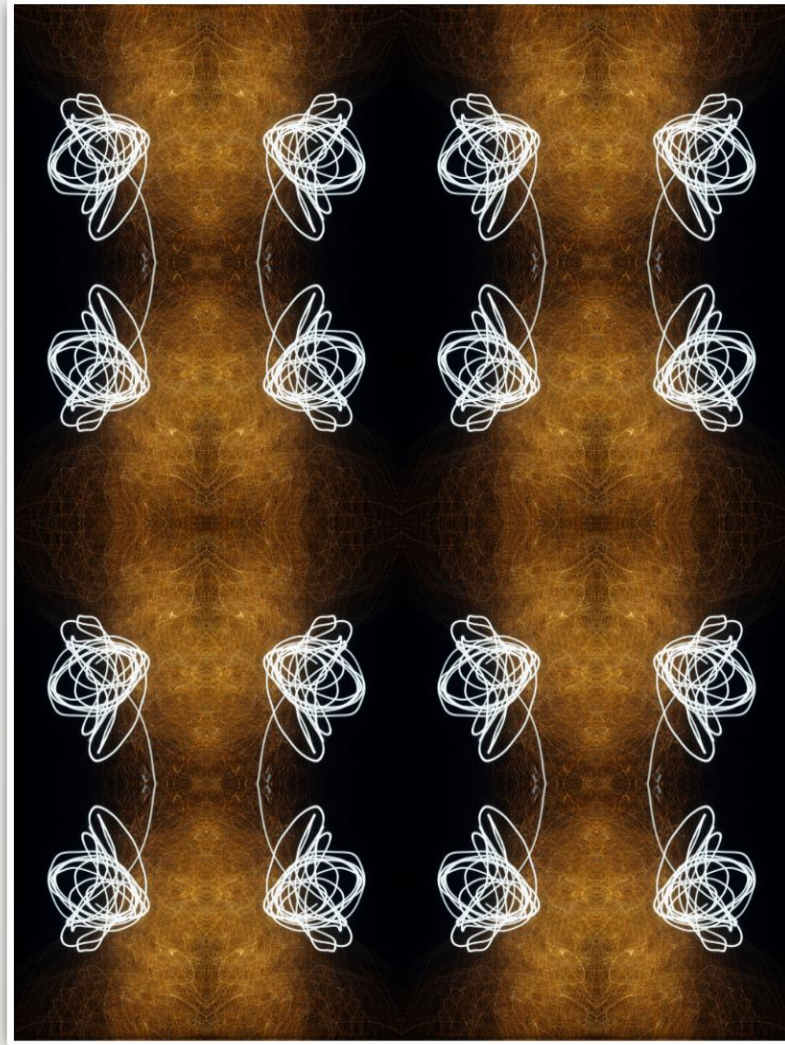


SYMMETRY II

ART BY PETRA TRIMMEL



Light Dance_4309_Set

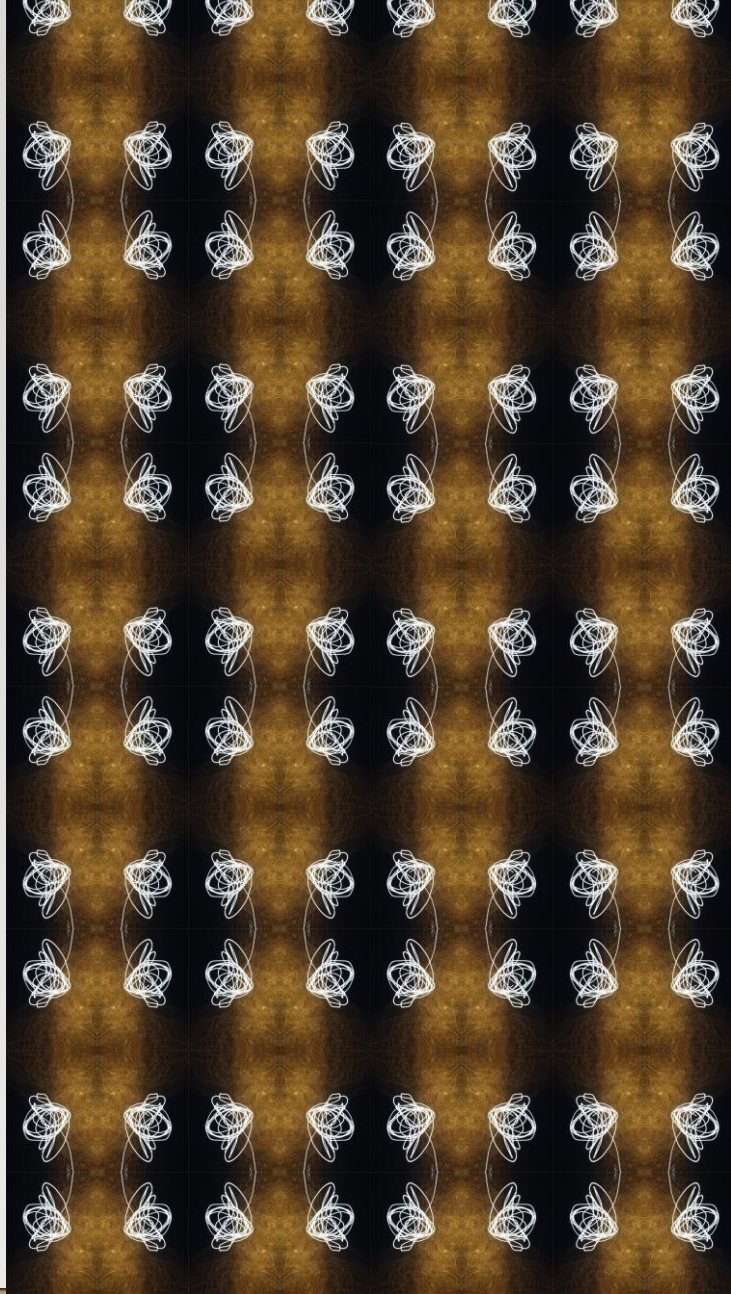


Light Dance_4312_Set

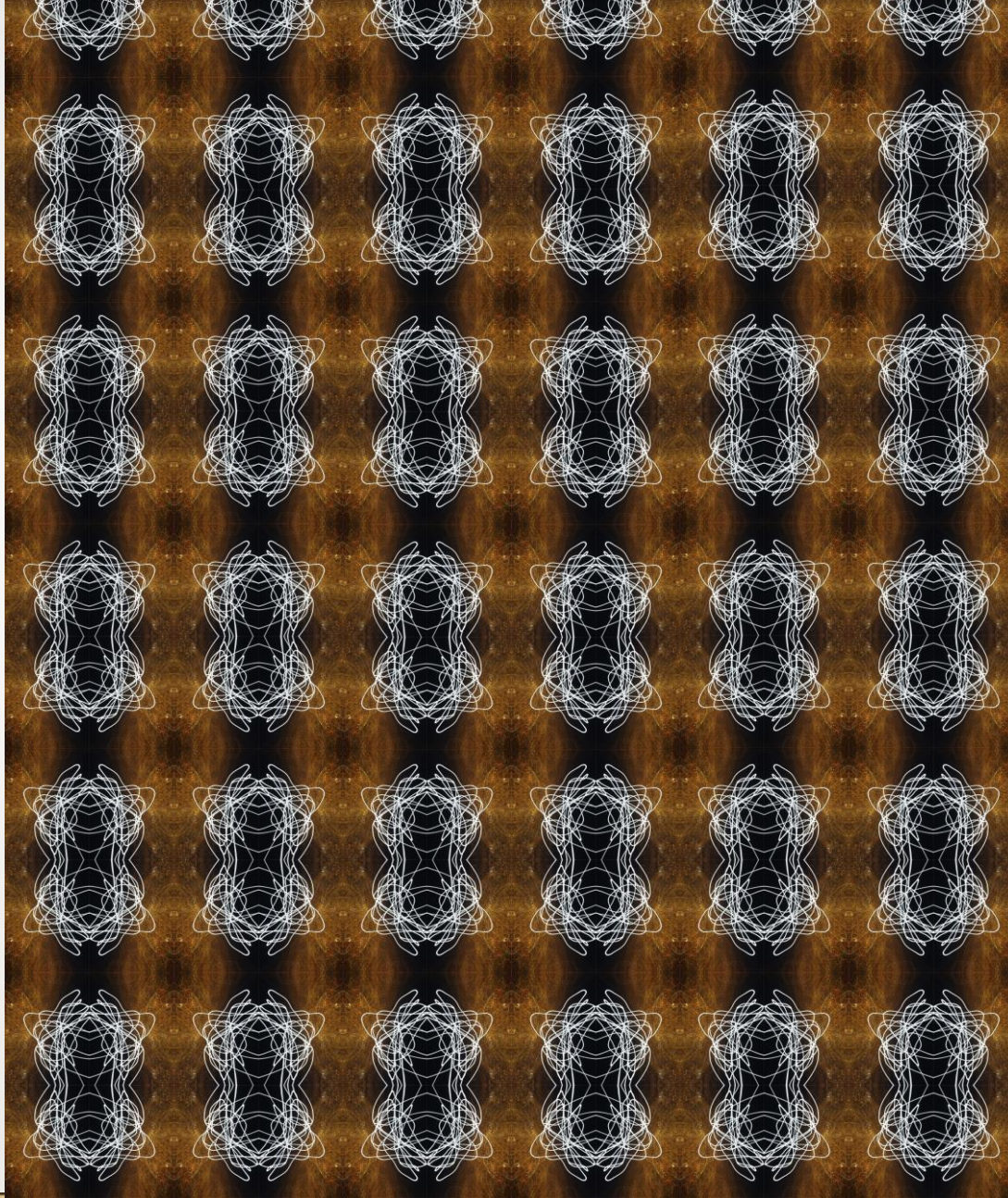
60 x 45 inches

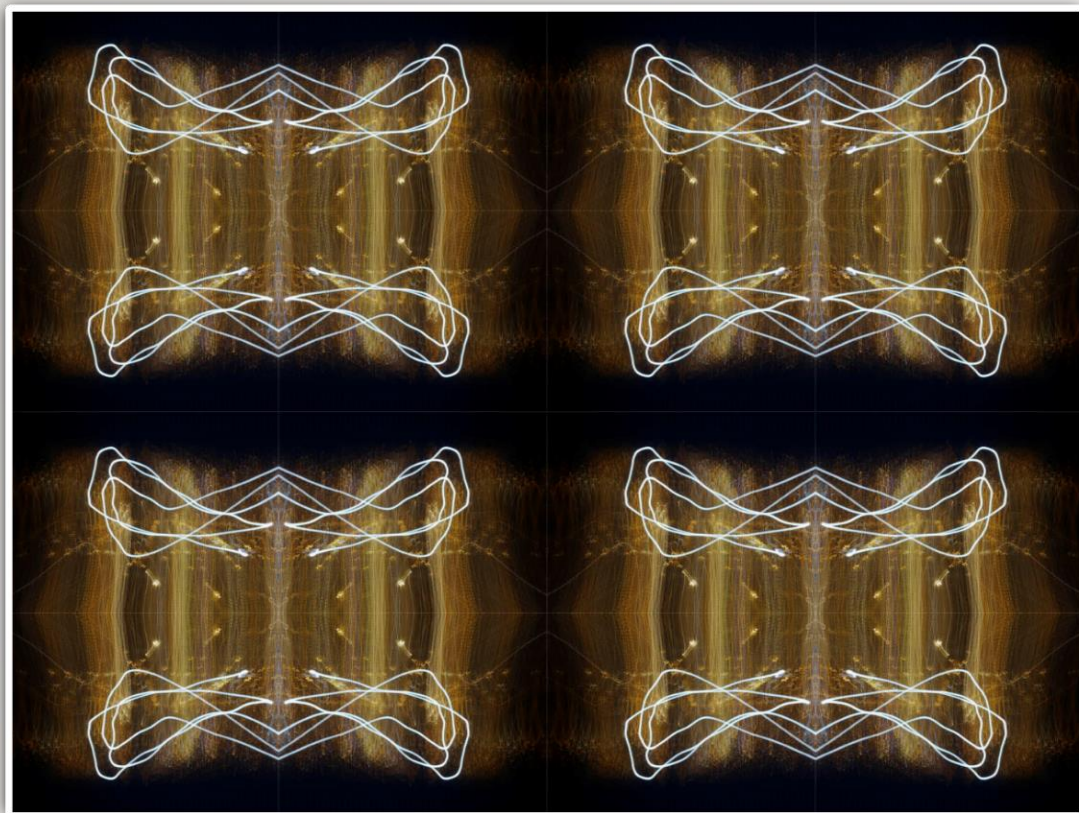
LIGHT DANCE

Light Dance_4312_Set

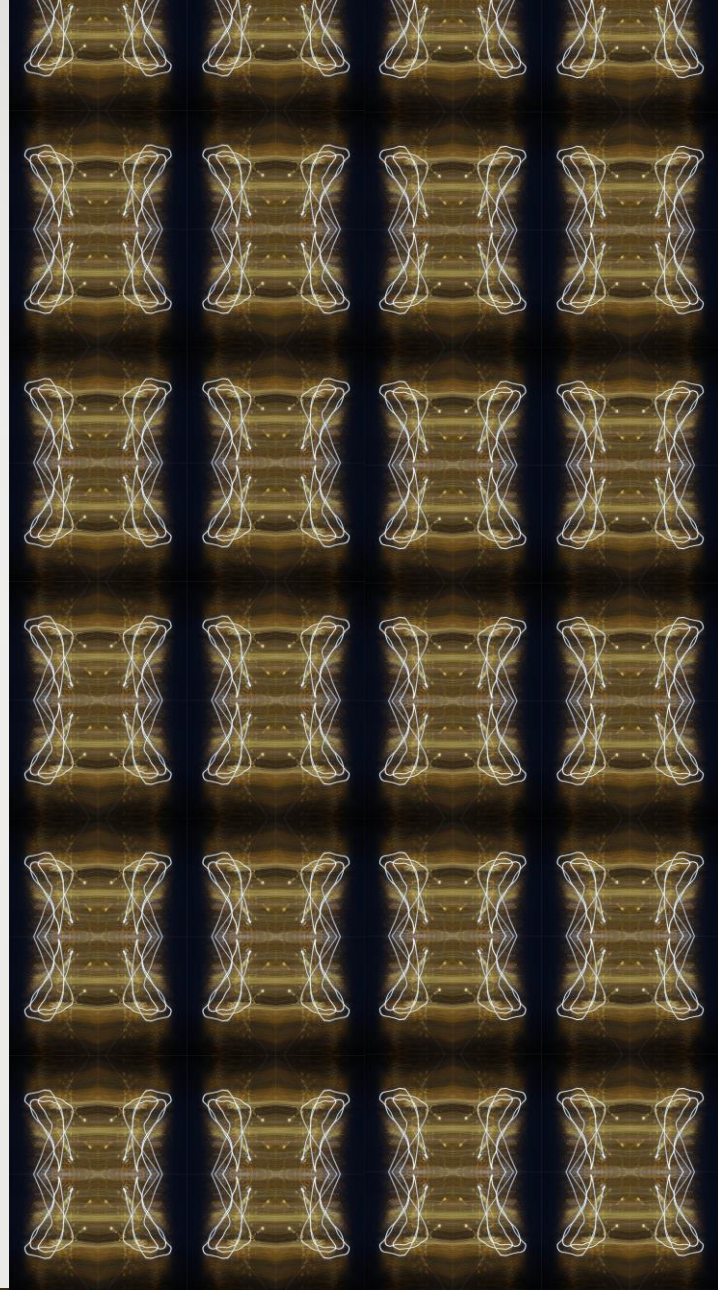


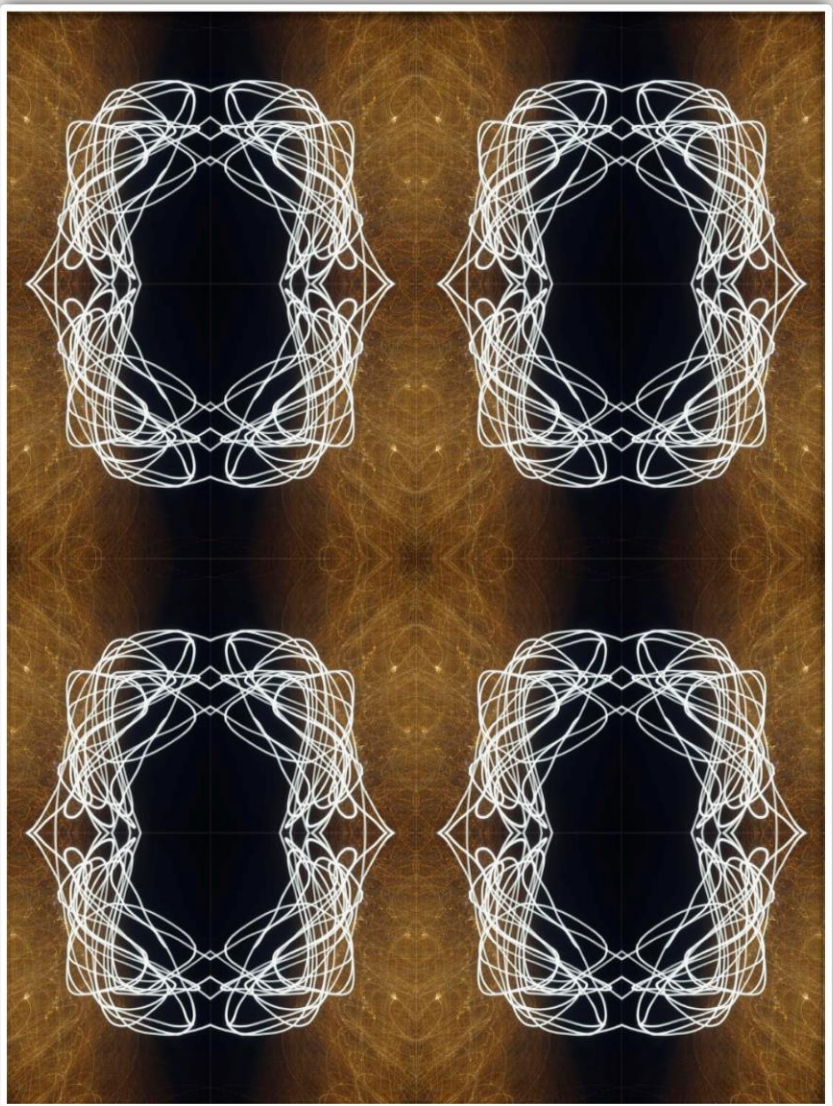
Light Dance_4309_Set



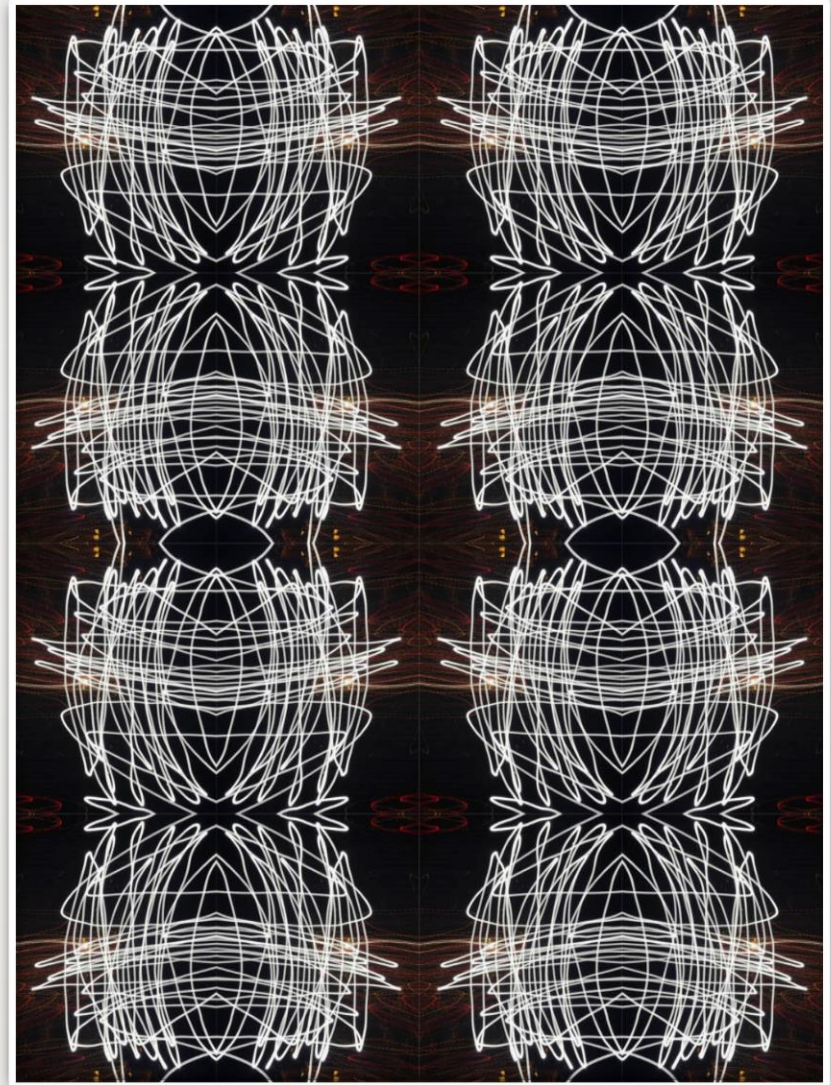


Light Dance_4317_Set

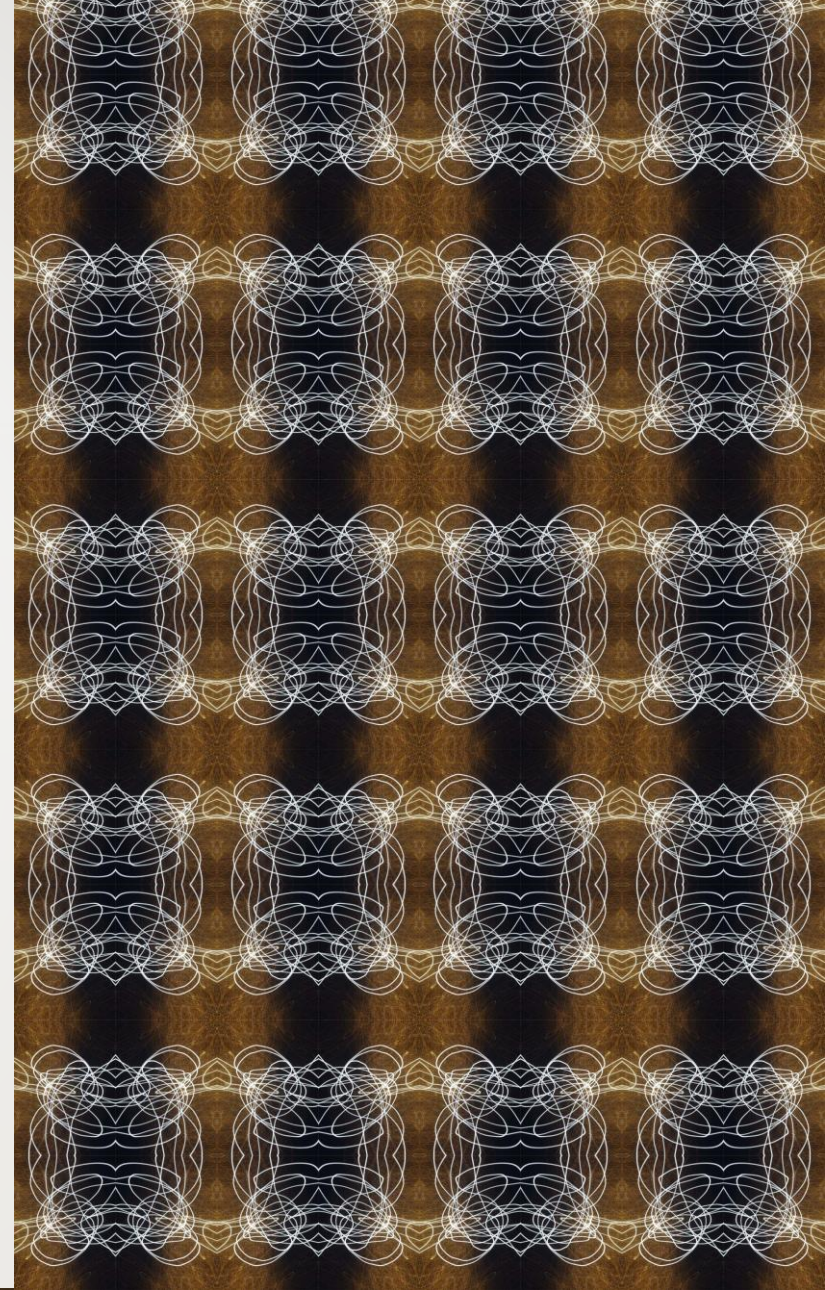
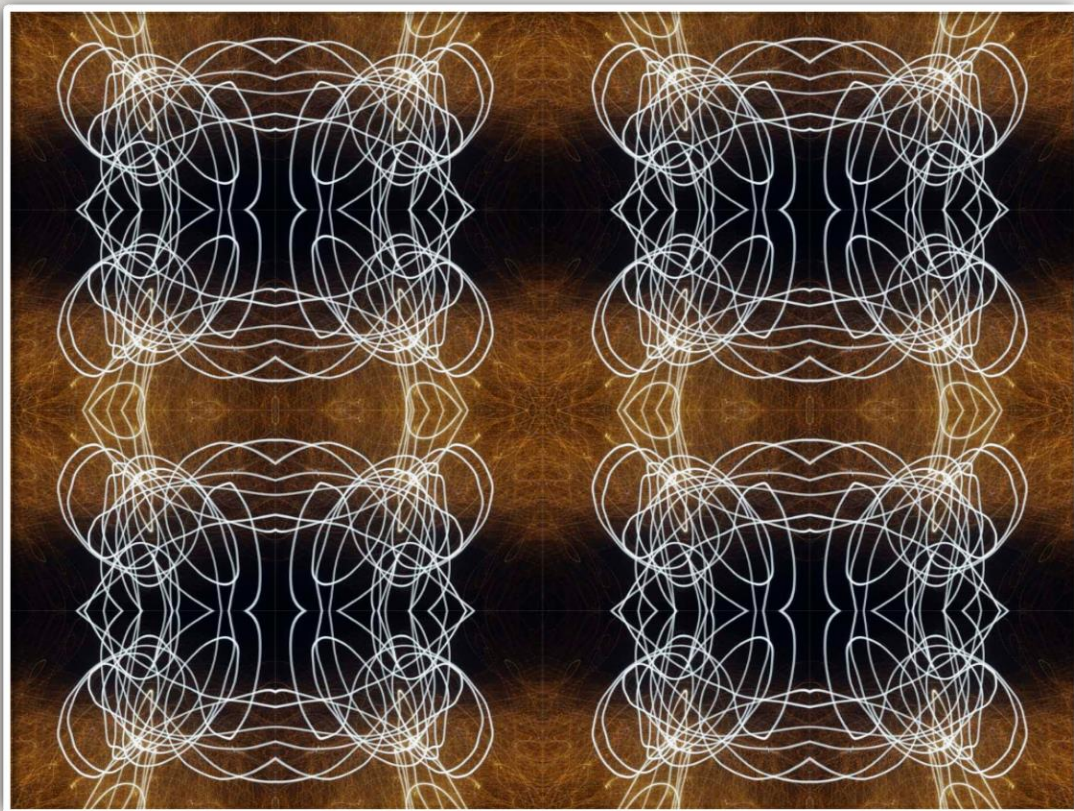


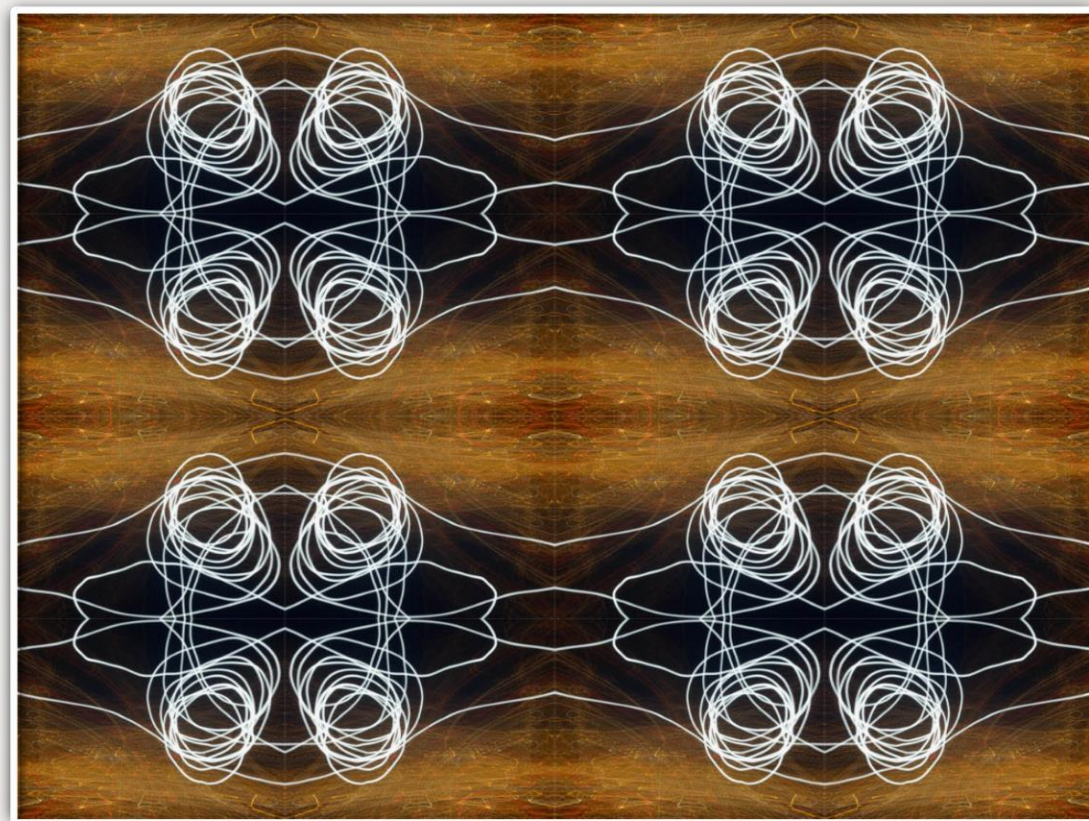
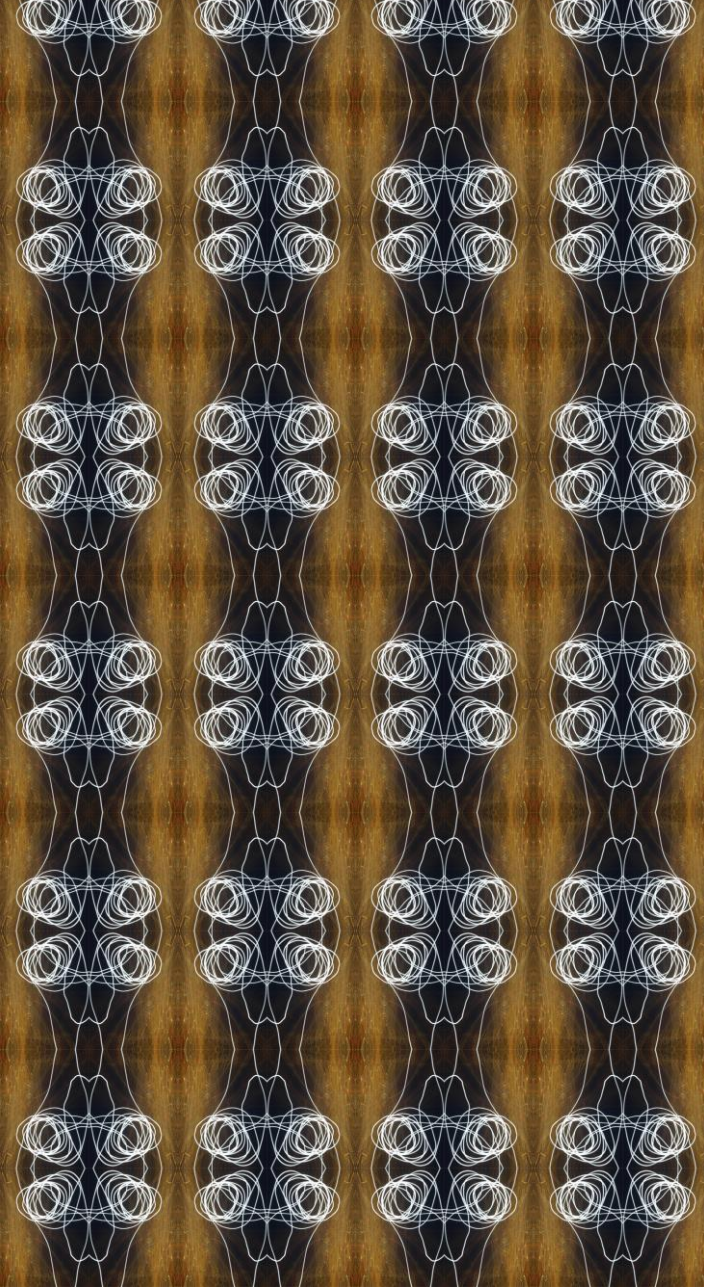


Light Dance_4315_Set

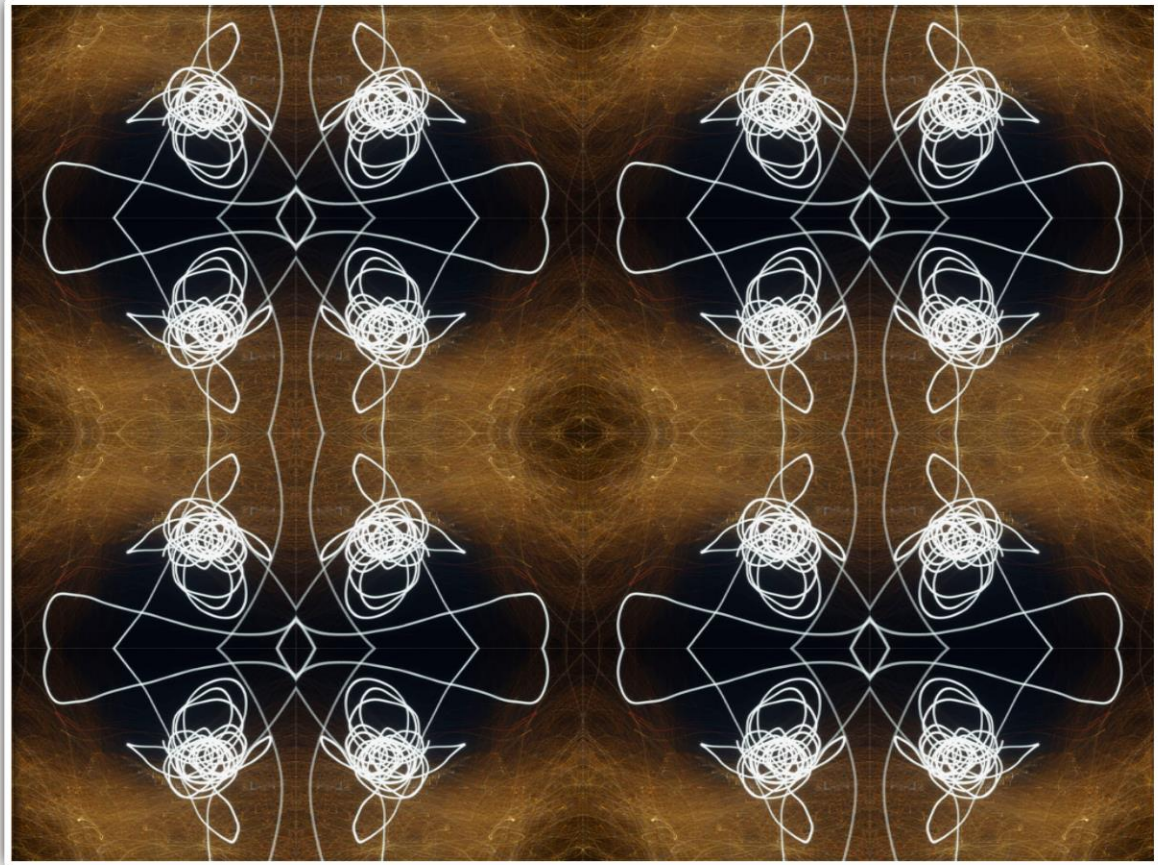


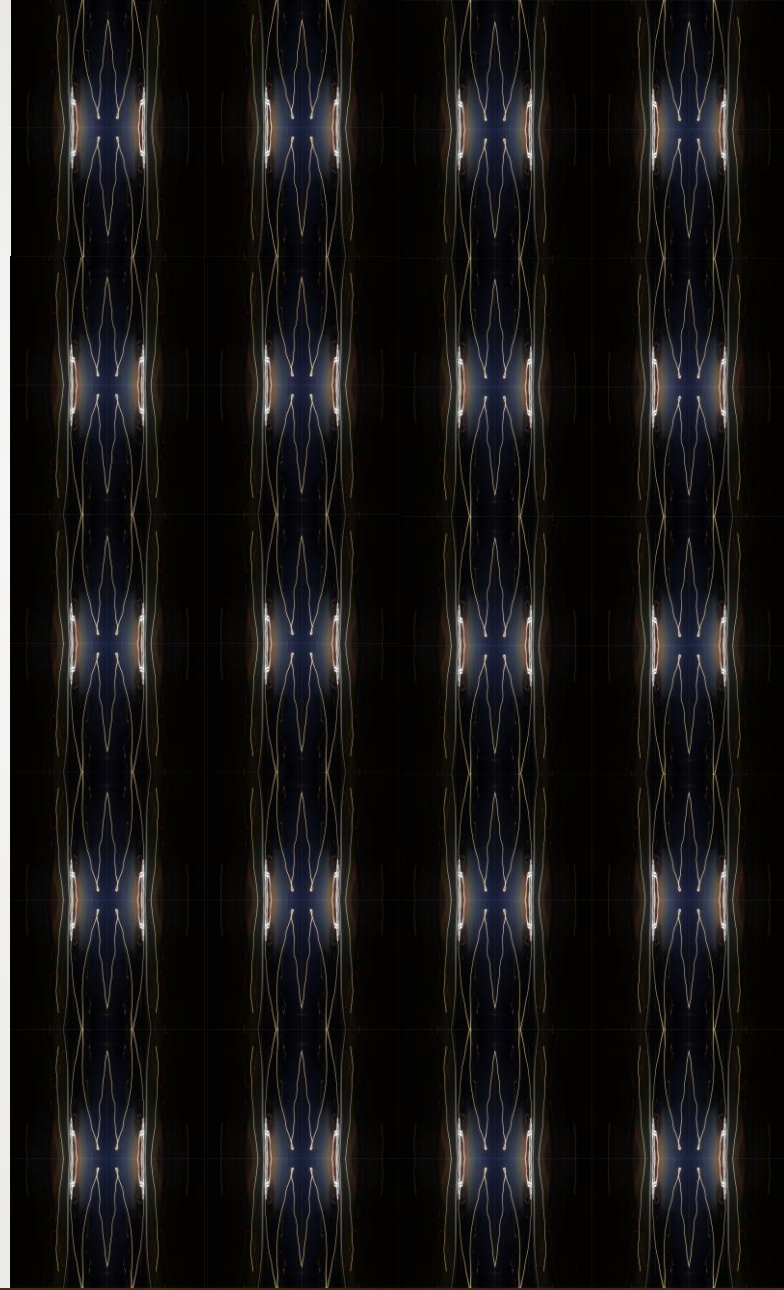
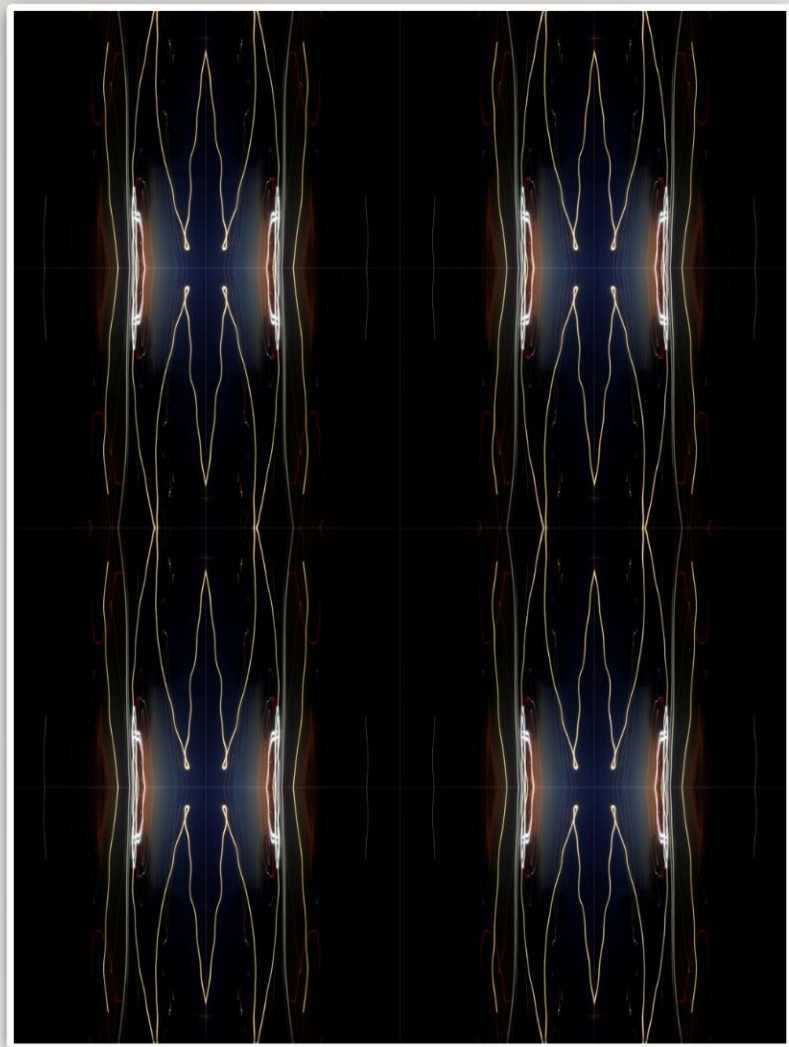
Light Dance_4311_Set



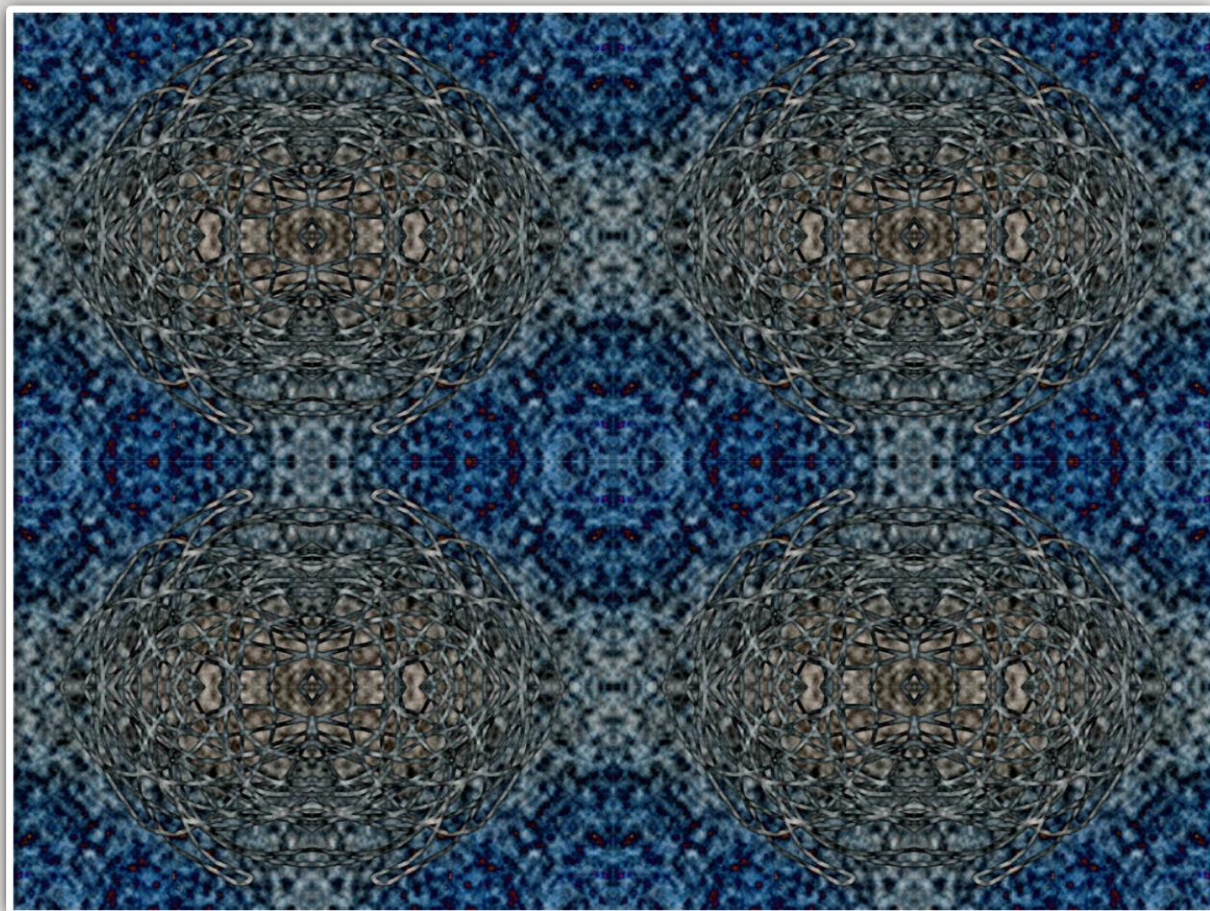


Light Dance_4310_Set

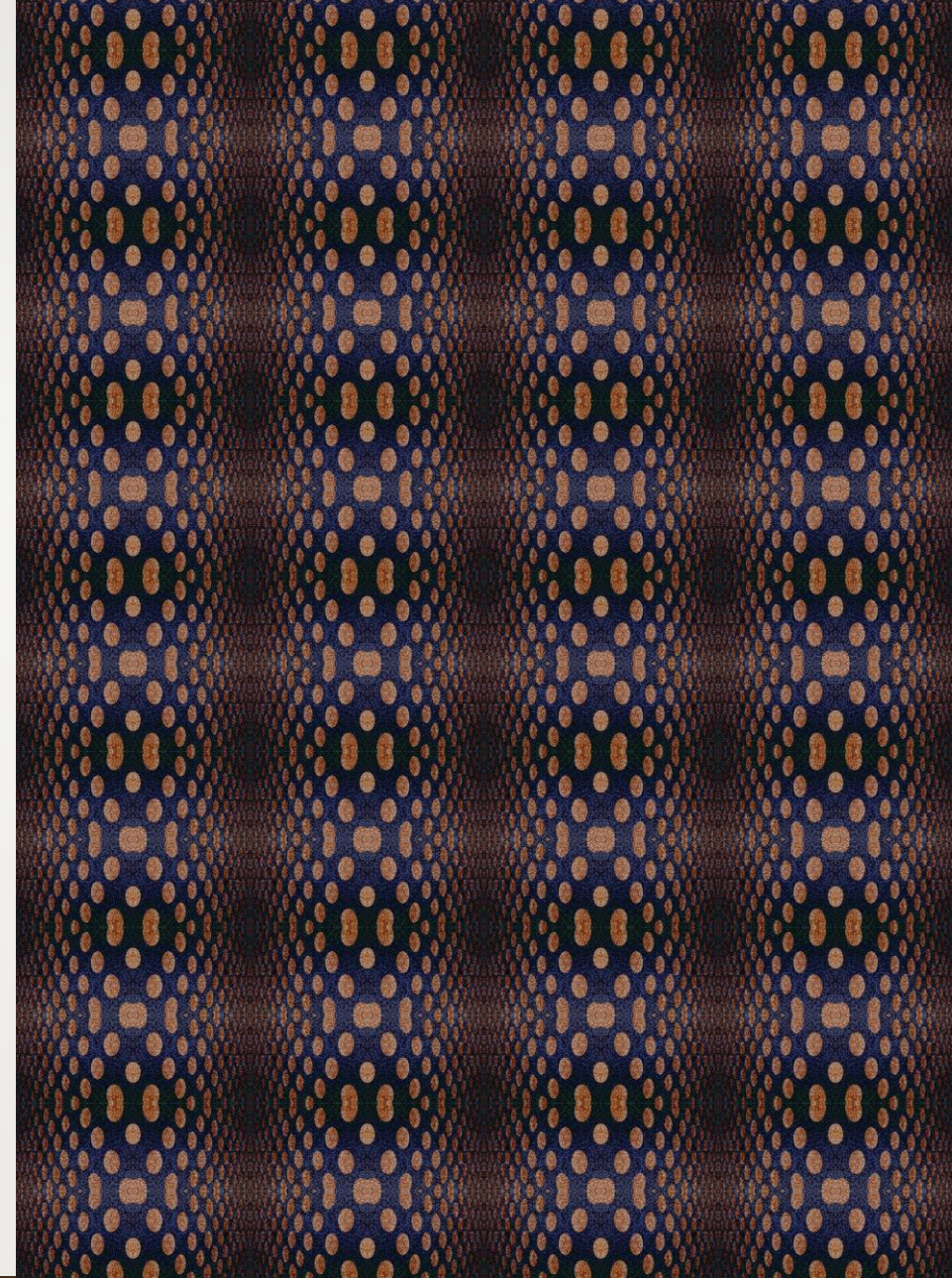
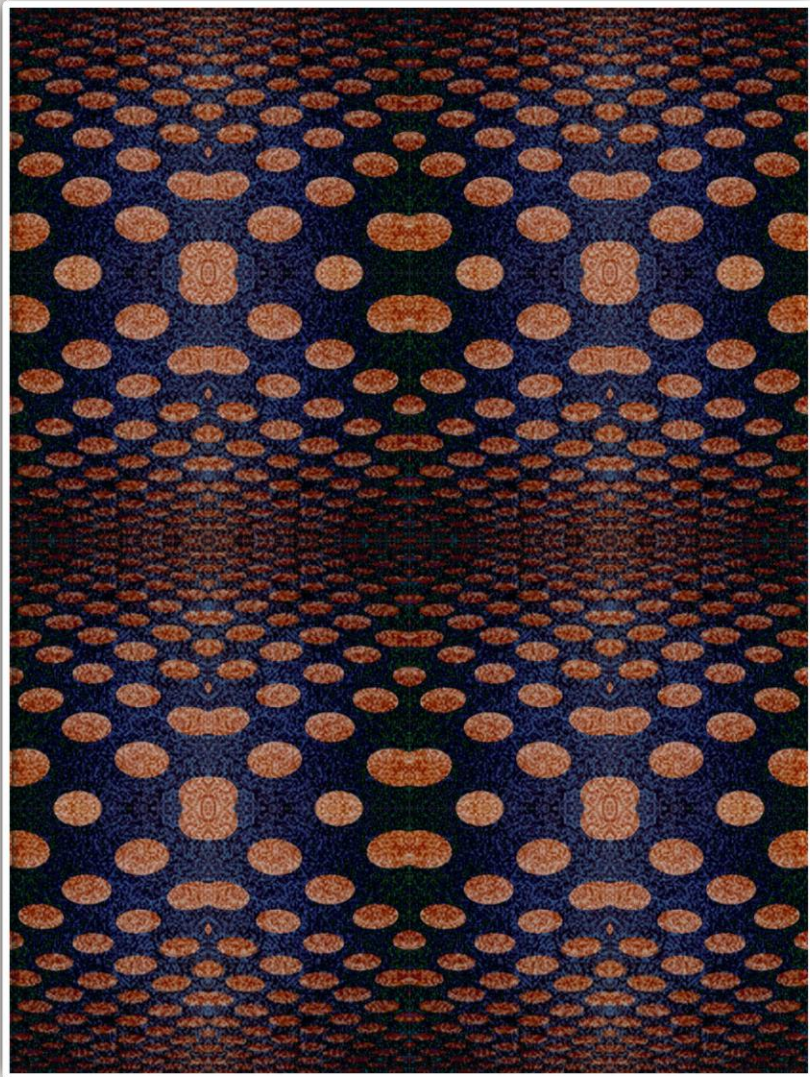




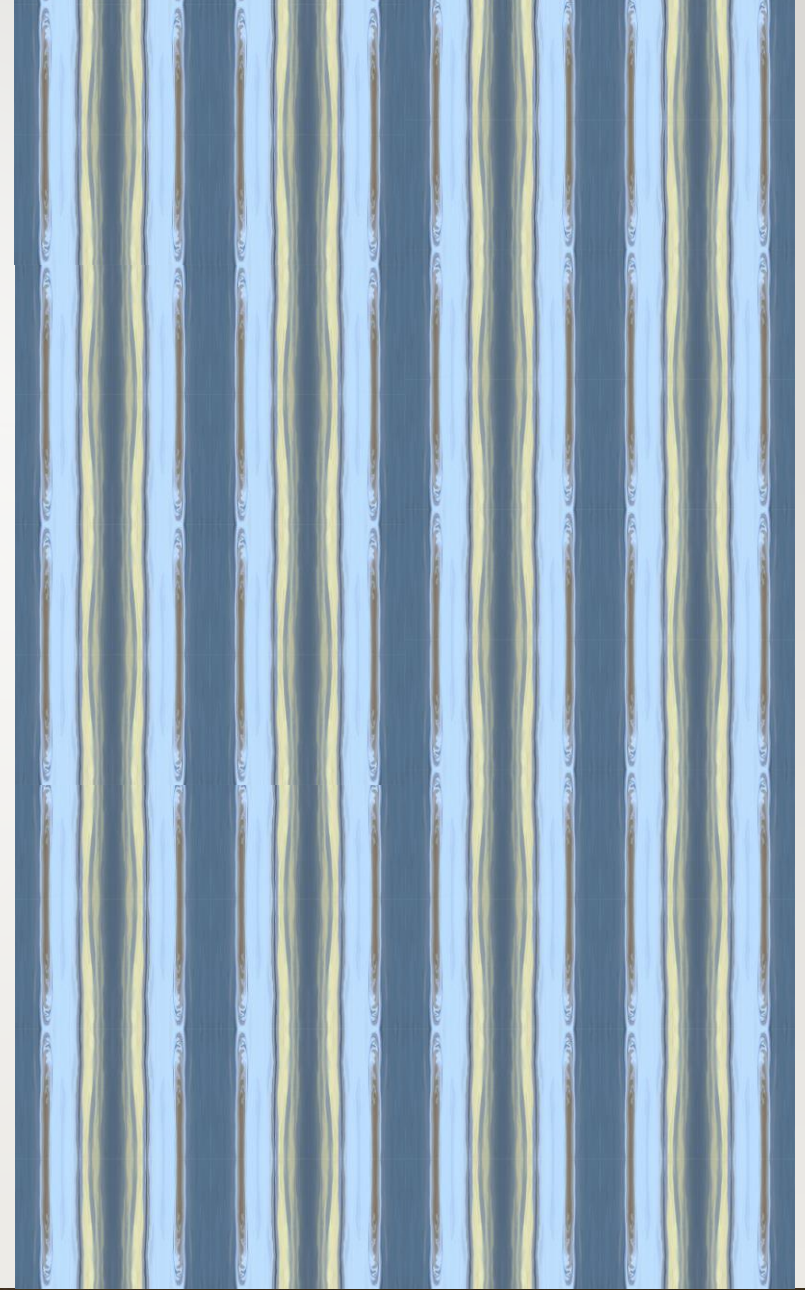
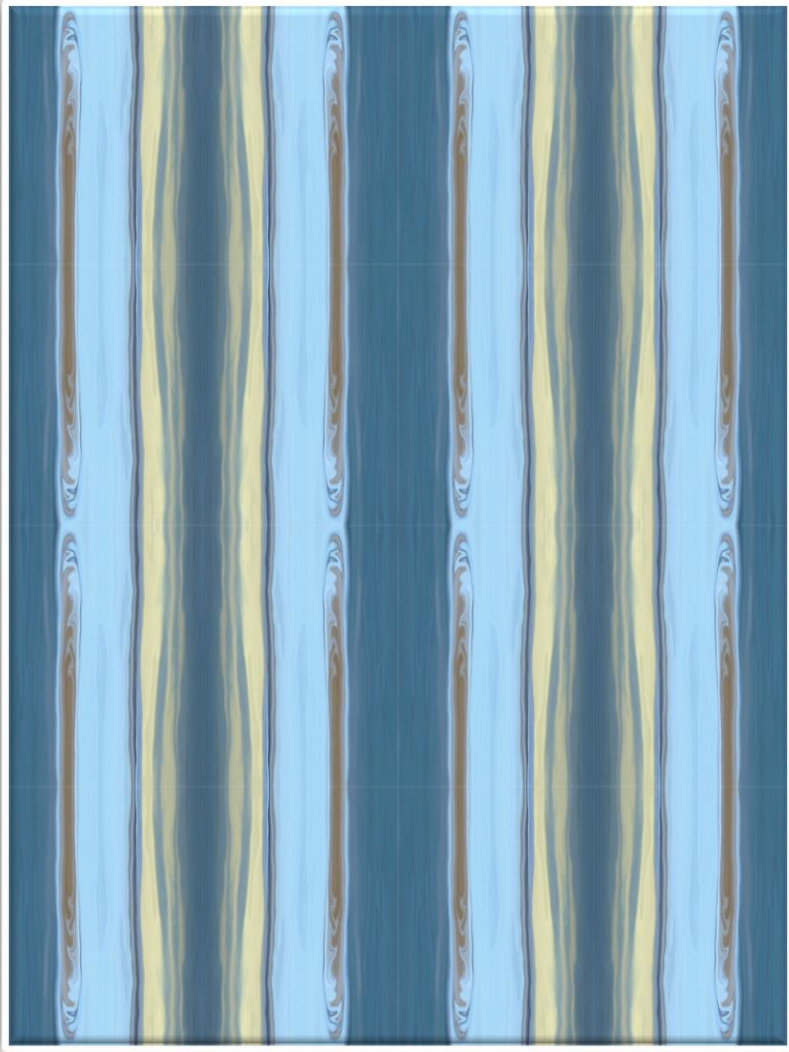
Light Dance_0676_Set



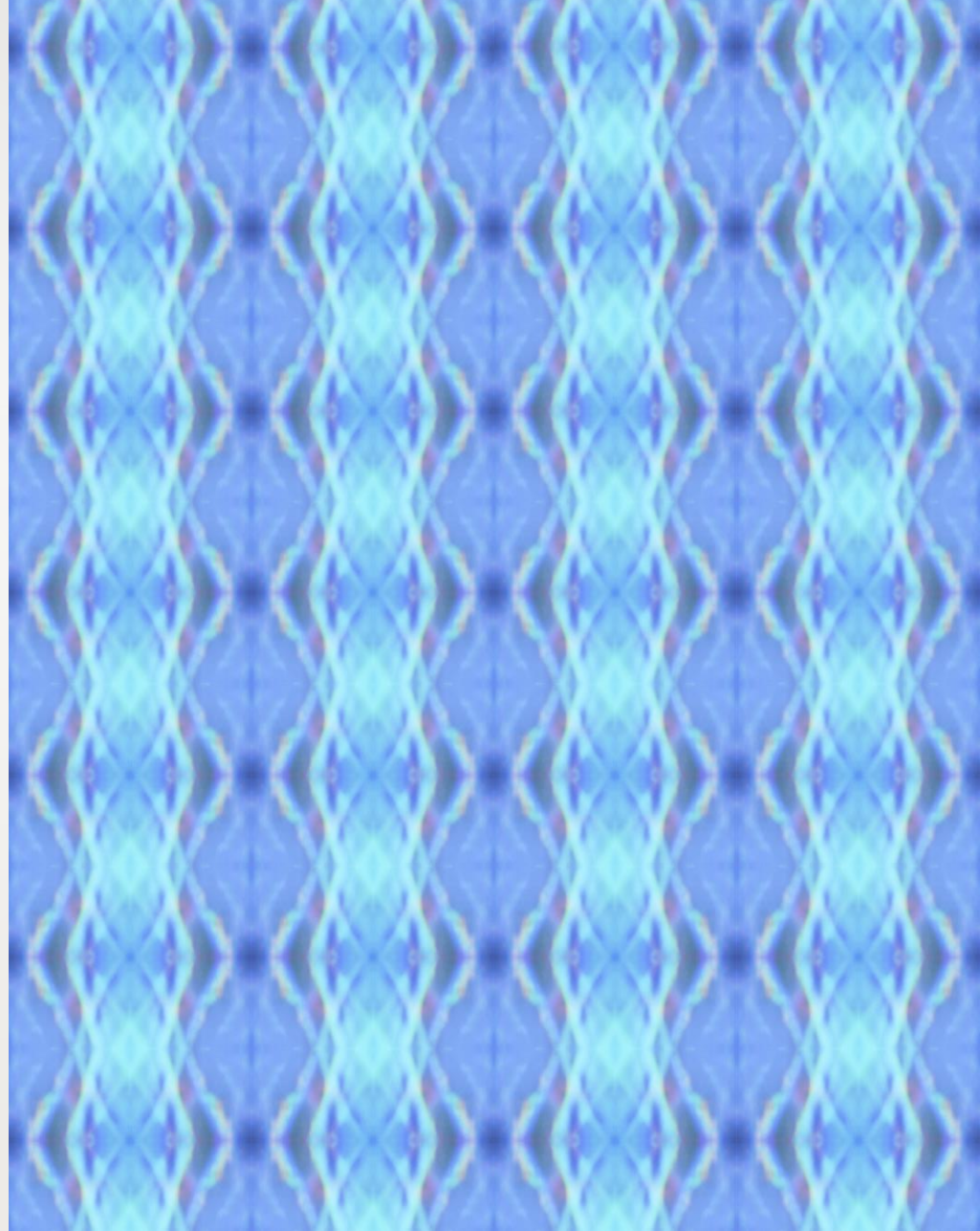
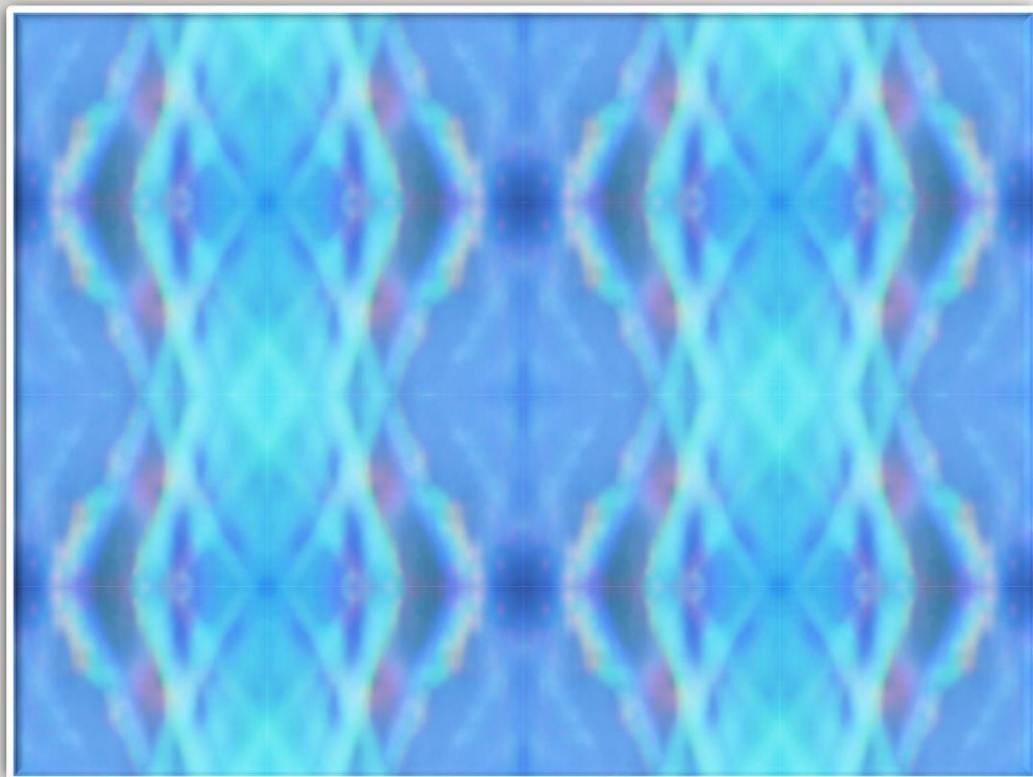
Grey Lace_4307_Set

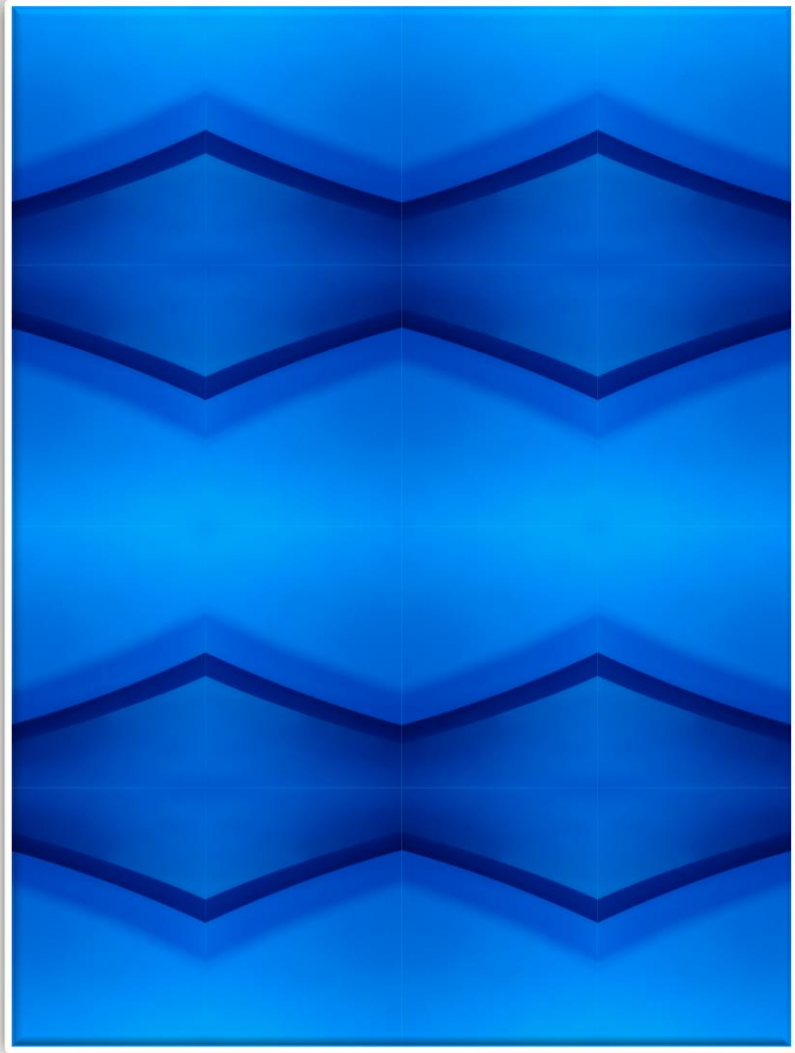


Soft Velvet_03499_Set

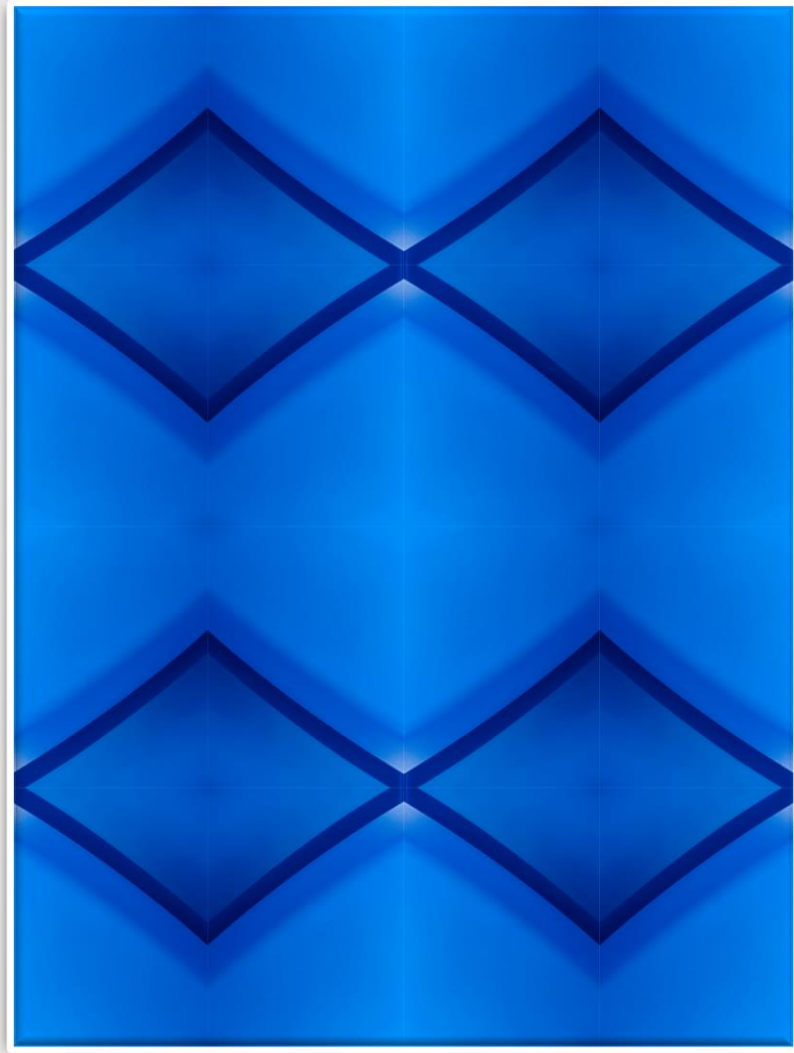


Winter Sunrise_6816_Set



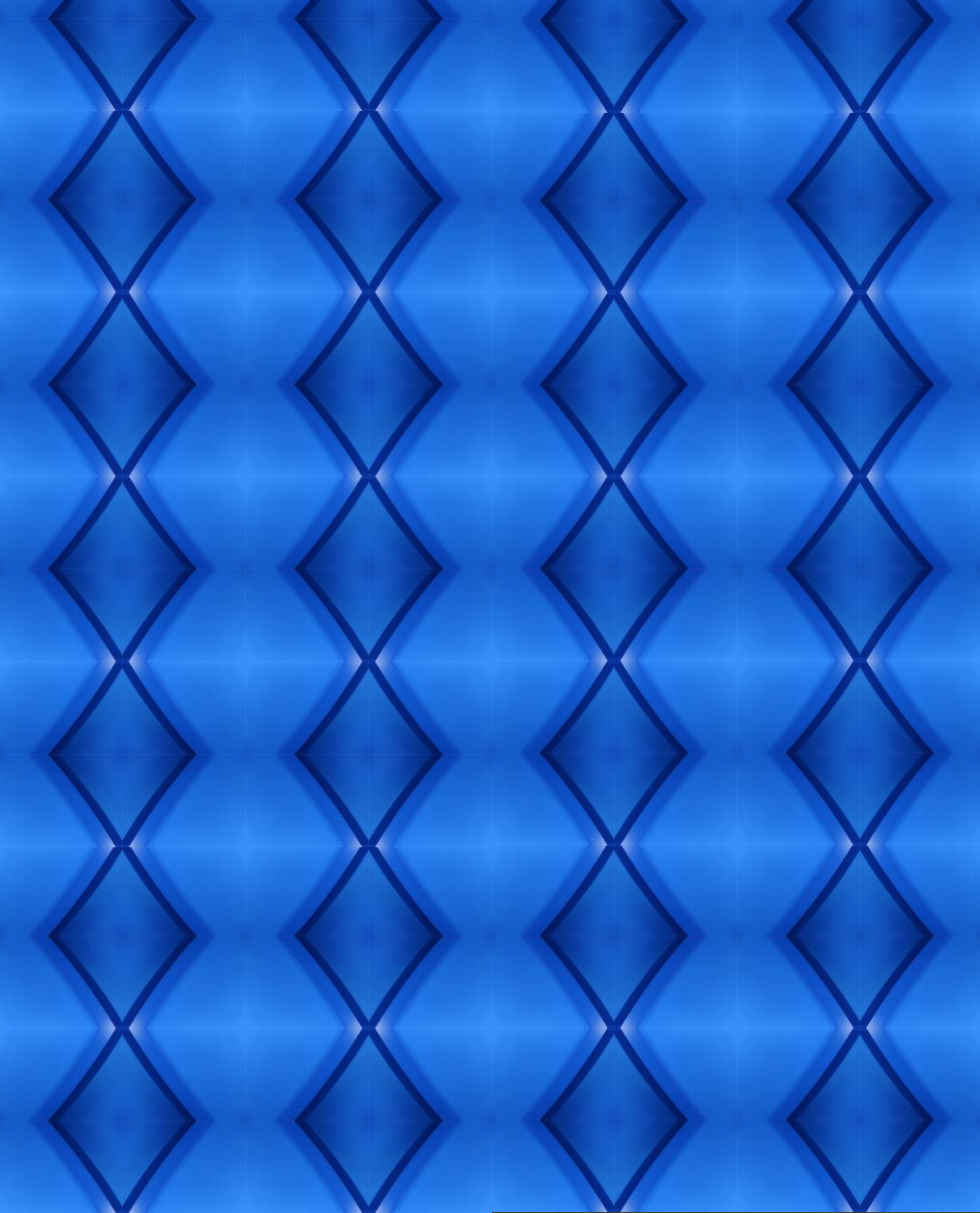


Blue Line_4477_Set

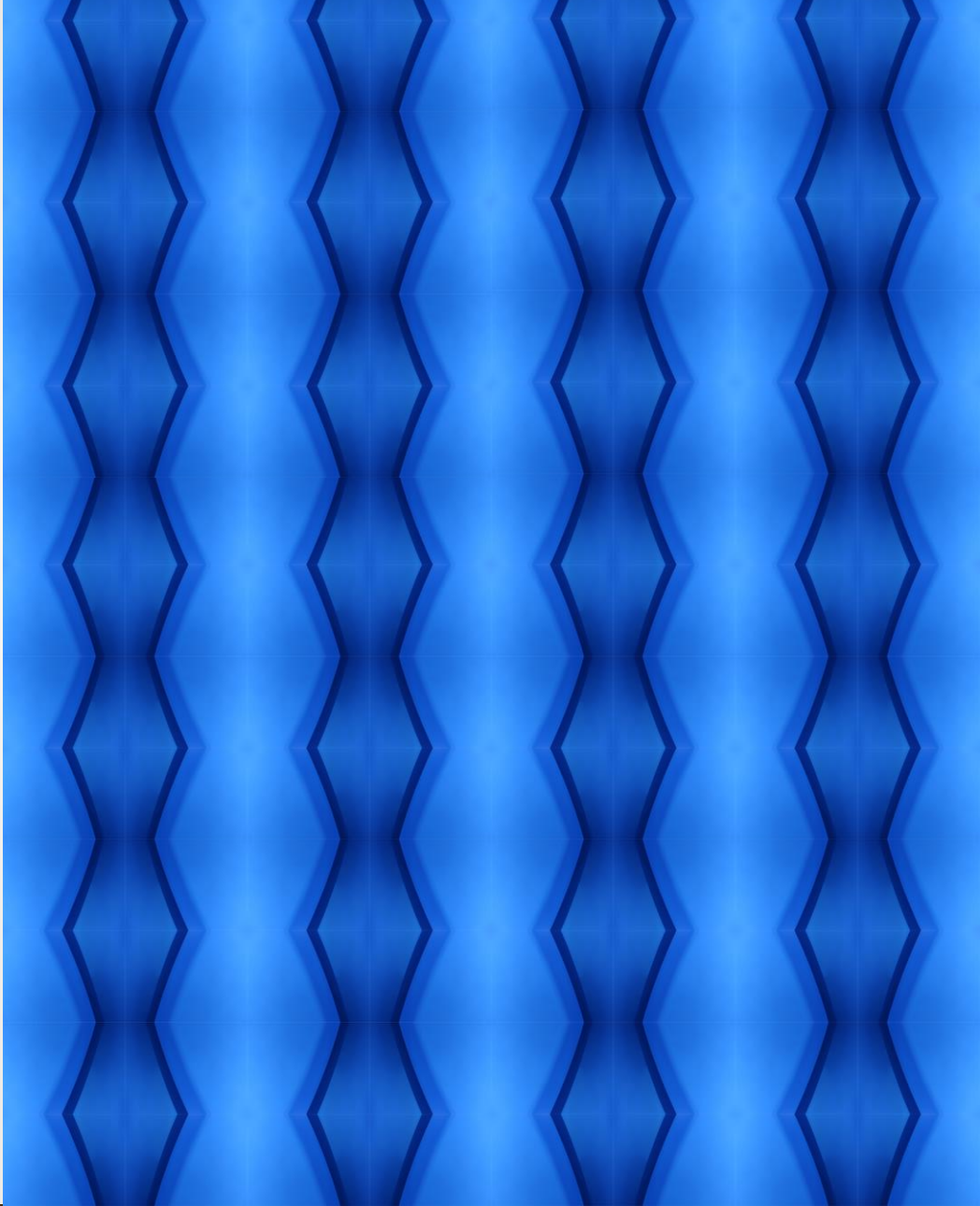
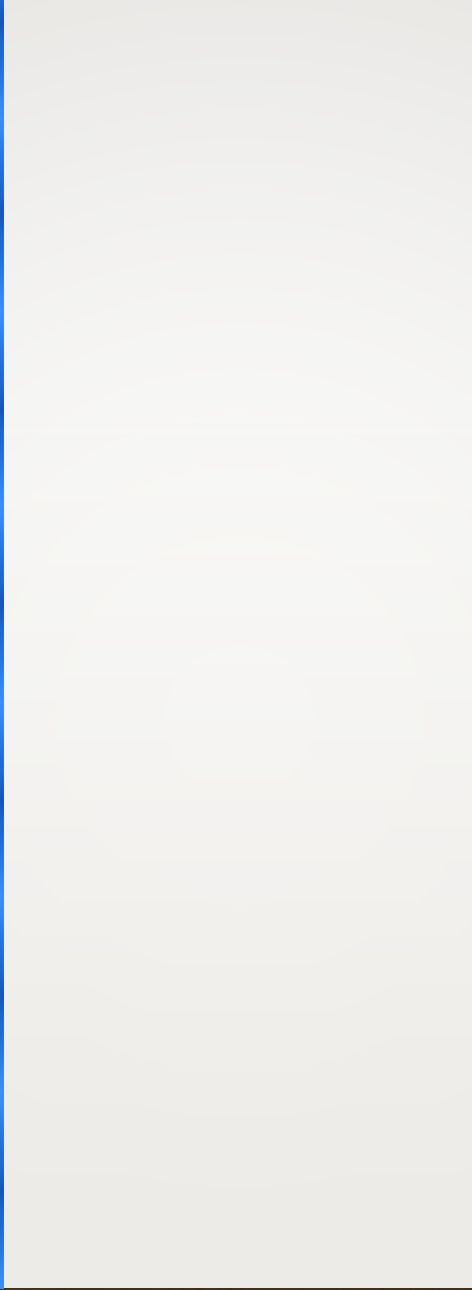


Blue Line_4478_Set

BLUE LINE



Blue Line_4478_Set



Blue Line_4477_Set



About the Artist

Petra Ute Trimmel's artwork takes a new view at enchanting and familiar places. In her work, she gets inspired by locations, nature Petra visits and things / topics she explores. Having subjects as diverse as a city's downtown architecture or the remote wilderness in California's Sierra Nevada mountains, Petra's work reproduces familiar visual signs, arranging them into new conceptually layered pieces. Petra invites the viewer to move into the visual story she created in the art, yet make it their own.

Often these themes are stylistically simplified into still but dynamic landscapes, or combined to create a new phantasy-filled, surreal scenery or abstract interpretation of a beautiful object. In a somewhat realistic looking landscape you might find whimsical details.

Some of the colors Petra chooses, establish a dream-like surreal quality, suggest notions of calmness, other compositions are bright, playful and filled with fiesta-like life.

The artwork titles usually relate to the place Petra visited or object she looked at, when she was inspired to create the piece, rather than what the viewer is supposed to see in the finished artwork. Let your imagination fly freely!

At times the artwork you see is part of a series. Multiple works, related in style or color palette allow you to group them for a themed look in your space or home.

During Petra's time out in nature, or walking through a busy city, new areas of inspiration lead to the next body of work. Stay tuned.

Contact: Petra Trimmel, email: petra@petratrimmel.com, ph: 1-415-682-3904, studio: 1647 10th Ave., San Francisco, CA 94122, USA



Contact:

Petra Trimmel

email: petra@petratrimmel.com

ph: 1-415-682-3904,

studio: 1647 10th Ave., San Francisco, CA 94122, USA

Throughout Petra Ute Trimmel's career visual art has been a driving force. Early on Petra worked as a graphic designer in several advertising agencies, where her work spanned a wide variety of product and media. Later, leading product development and marketing teams, Petra's art directing of graphic- and industrial-designers led to many award-winning products, sold worldwide. Since 2014: not only does Petra focus on her own creativity through visual art, but she also helps other artists place their art in top-tier hotels, beautify work-places, or create healing environments in healthcare settings. Studio Art-Y-Sana is based out of San Francisco, California.

